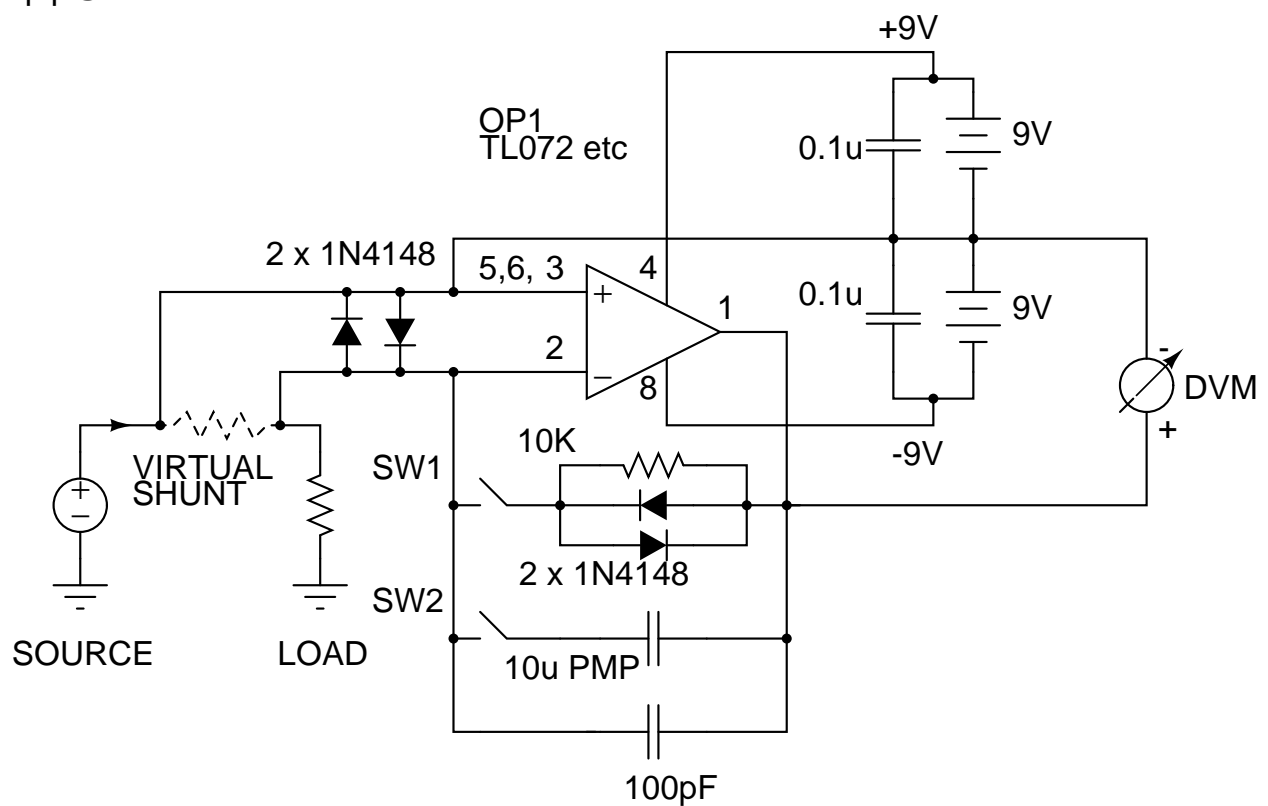


VIRTUAL SHUNT CIRCUIT

Measures low load currents with ordinary DVM.

With $R_{fb} = 10K$ DVM shows $10mV/uA$, signed (source or drain)

plp@actcom.co.il 2005



Measure current: SW1 closed, SW2 open

Integrate pulses: SW2 closed, SW1 open (close for reset of fast pulses)

Maximum load current ~ 100mA continuous